



# LEPROSY RESEARCH INITIATIVE



**ANNUAL REPORT 2022**

## 2 CONTENTS

<b>3</b>	Foreword .....	3
<b>4</b>	About the Leprosy Research Initiative .....	4
<b>5</b>	Promoting, facilitating and funding high-quality leprosy research.....	5
5.1	Grant cycle throughout 2022 .....	5
5.2	Start of research projects .....	6
5.3	Monitoring of ongoing research projects.....	6
5.1	Geographical distribution research projects .....	7
5.2	Completed projects.....	7
<b>6</b>	Strengthening research capacity .....	8
6.1	LRI Spring Meeting.....	8
6.2	Workshop on data analysis .....	8
6.3	Research capacity strengthening grant .....	8
<b>7</b>	Facilitating translation of research results into policy and practice .....	9
7.1	International Leprosy Congress.....	9
7.2	Communication of publications.....	9
7.3	Impact Assessment .....	10
<b>8</b>	Future perspectives .....	10
<b>9</b>	Our partners in 2022.....	11
<b>10</b>	Our team in 2022.....	11
10.1	Executives Group .....	11
10.2	Steering Committee.....	11
10.3	Scientific Review Committee .....	12
10.4	LRI Secretariat.....	12
<b>11</b>	Reviewer acknowledgements.....	13
<b>12</b>	Financial narrative .....	15
<b>13</b>	Annual accounts 2022 .....	16
	Colophon.....	34

### 3 FOREWORD

We commend all research teams and facilitators for their dedication, flexibility and resilience reflected in the project progress presented, as the impact of the COVID-19 pandemic still affected our work and projects in 2022.

Following two years of COVID-19 related restrictions in many countries, it has been great to be able to meet with researchers, Partners and other stakeholders in-person again in 2022. We enjoyed exchanging ideas through shared learning at the International Leprosy Congress, NTD NGO Network Conference and LRI workshop on data analysis.

The LRI Spring Meeting brought together 195 participants from 48 countries. Hosted online, the event allowed for a large international participation interested in the progress of the LRI-funded research projects.

We currently support 31 research projects in 20 countries across our five research priorities of diagnostics tests, disability, operational research, stigma & discrimination and transmission. For these projects, including seven which started in 2022, a total of €1,190,427 was allocated throughout the year.

Finally, we are also very excited to have launched a new research capacity strengthening grant in 2022, aimed at early career researchers.

As we are approaching 10 years of LRI, during which we have granted more than €10 million to over 80 projects across 20 countries, we look forward to an exciting year with new developments and the celebration of our 10<sup>th</sup> anniversary!

We wish to thank everyone who contributed to the work of the LRI in 2022 through personal involvement, organisational support or collaboration in our shared aim towards zero leprosy.



**Linda Hummel**

Director Leprosy Research Initiative



**Bram van Ojik**

Chair Supervisory Board

## 4 ABOUT THE LEPROSY RESEARCH INITIATIVE

The Leprosy Research Initiative (LRI) was launched in 2013 to boost scientific research in leprosy.

Our vision is a **world free of leprosy** and we aim to contribute to this vision by:

1. promoting, facilitating and funding high-quality leprosy research;
2. strengthening research capacity in endemic countries, and;
3. facilitating translation of research results into policy and practice.

An established joint research fund combined with an efficient, transparent and rigorous selection and progress monitoring processes ensure scientifically high-quality and sustainable funding. Understanding training needs and providing opportunities for shared learning strengthen capacity in research. Through encouragement and monitoring of dissemination and uptake of study findings, we strive for a positive impact towards zero transmission, zero disability and zero exclusion.

The LRI is governed and managed by the following bodies:

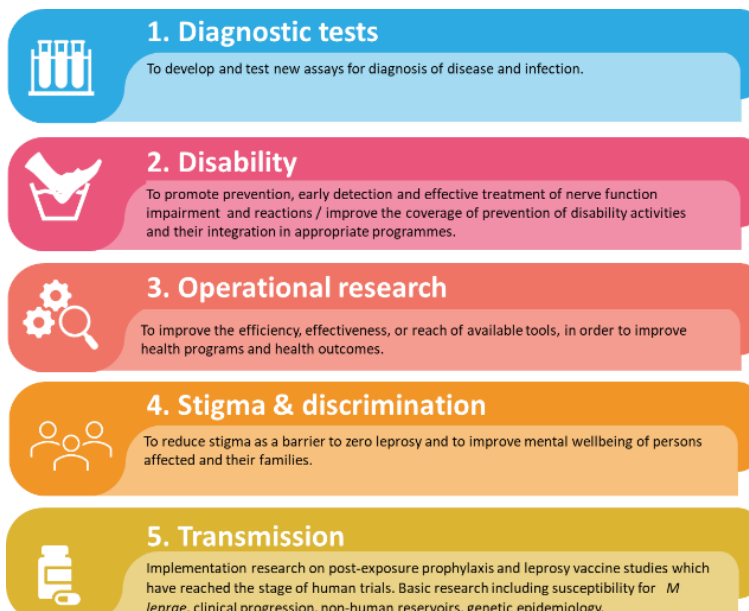
**Executives Group (EG):** oversees strategy and is the decision-making authority; consists of the executive directors of the Partners.

**Steering Committee (SC):** provides scientific guidance and reviews submitted letters of intent; consists of the research coordinators of the Partners (ex-officio) and an independent Chair

**Scientific Review Committee (SRC):** assesses full proposals and project progress; consists of independent scientists

**Secretariat:** provides grant management and administration, technical support, and partner management; facilitates capacity strengthening, communication, meetings and events; based in Amsterdam, the Netherlands

Following a priority-setting assessment, LRI stakeholders identified five main research priorities for 2020-2025:



To be eligible for LRI funding, projects should focus on one of these priorities. More details can be found in our [Joint Policy 2020-2025](#).

## 5 PROMOTING, FACILITATING AND FUNDING HIGH-QUALITY LEPROSY RESEARCH

The annual call for research proposals consists of a two-stage application process; the submission of an initial Letter of Intent (LoI) outlining the study aim, envisaged approach and indication of scope, budget and timeline, followed by a detailed proposal for selected applicants. Using an online grant management system, we have developed a thorough review process that gives applicants the opportunity to improve their application based on the feedback from external reviewers resulting in the selection of the most promising proposals for high-quality and impactful leprosy research.

### 5.1 GRANT CYCLE THROUGHOUT 2022

The submission and review process of applications started with the launching of the call for proposals in December 2021 (step 1), with a special focus on research on early case-finding and diagnostics.

After closing the submission deadline in January 2022, the Steering Committee (SC) met virtually in March to discuss their review of the Lols (step 2). Selected applicants were invited to submit a full proposal (step 3), these were reviewed by external reviewers (step 4).

Their anonymous feedback was shared with the applicants which could be addressed in the rebuttal proposal (step 5).

Next, in Autumn meetings, the Scientific Review Committee (SRC) reviewed the rebuttal proposals and recommended a selection of projects for funding, further discussed and ranked by the SC (step 6).

The final decision to accept proposals for funding was made by the Executives Group (EG) in November (step 7) after which the research groups were informed.



## 5.2 START OF RESEARCH PROJECTS

In addition, seven research projects made their start in 2022 – with a total budget of €913,756. These grants had been awarded at the end of 2021, selected from 69 Letters of Intent out of which 18 full proposals were reviewed. The newly started projects were:

Title	Lead applicant <i>Host institution</i>	Country	Budget	Co-funding
<a href="#">Reducing leprosy stigma among healthcare workers in Niger</a>	Abdou <i>The Leprosy Mission Niger</i>	Niger	€199,835	
<a href="#">Endgame strategy for leprosy in the Maldives: optimal targeting of post-exposure prophylaxis to interrupt transmission</a>	Blok <i>Erasmus MC, the Netherlands</i>	The Maldives	€48,803	Turing Foundation
<a href="#">Identifying targets for drug repurposing in leprosy reactions via genetic susceptibility factors</a>	Schurr <i>Research Institute of the McGill University Health Centre, Canada</i>	Brazil / Vietnam	€133,377	
<a href="#">Participatory development of audio-delivered interventions and written material and assessment of their impact on the perception and knowledge of and attitudes towards leprosy: a cluster randomised trial in Nigeria</a>	Murphy-Okpala <i>RedAid Nigeria</i>	Nigeria	€143,346	
<a href="#">Removable off-loading devices versus total contact cast to promote healing of plantar ulcer in leprosy: a non-inferiority, randomized control trial</a>	Govindasamy <i>The Leprosy Mission Trust India</i>	India	€44,568	St Francis Leprosy Guild
<a href="#">How effective is ongoing SDR-PEP implementation under routine programme conditions – a retrospective cohort study in Nepal</a>	Banstola <i>NLR Nepal</i>	Nepal	€143,803	
<a href="#">The COMBINE study: Defining the impact of combined community-wide screening and mass chemoprophylaxis for leprosy in Kiribati: a prospective community implementation study</a>	Chambers <i>Pacific Leprosy Foundation, New Zealand</i>	Kiribati	€200,024	Turing Foundation

## 5.3 MONITORING OF ONGOING RESEARCH PROJECTS

Grantees submit progress reports twice a year, in March and September, on the basis of which the progress of the funded projects is monitored.

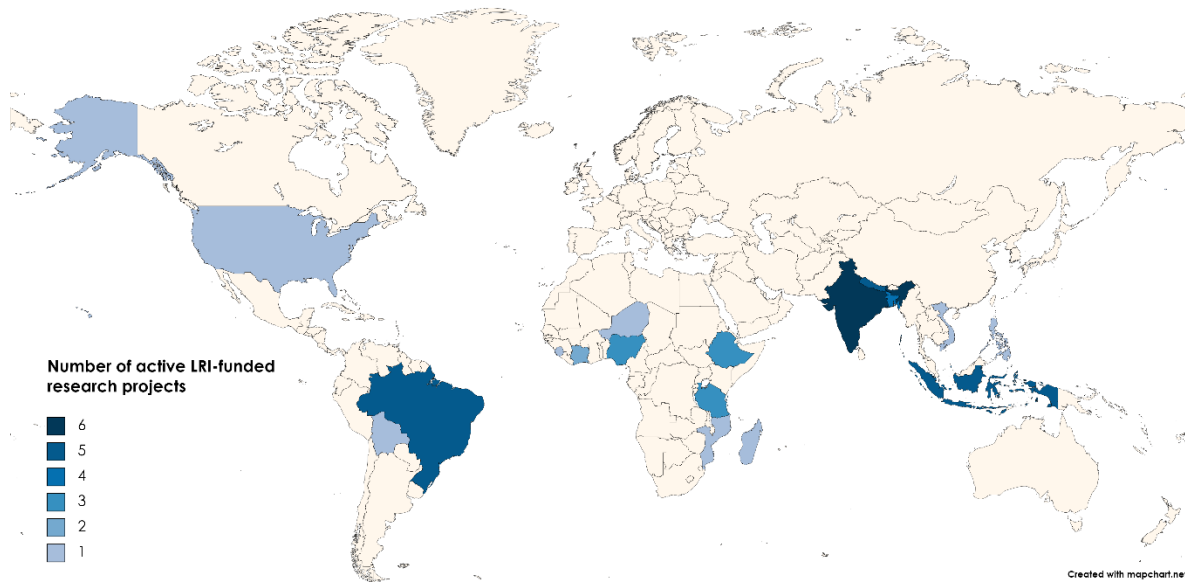
The SRC assesses study progress and financial reporting and discusses these in their virtual Spring (April 2022) and Autumn (October 2022) meetings, after which they provide recommendations to the EG on continuation of funding.

Although less impacted compared to the preceding years, also in 2022 research projects funded by the LRI have seen disruptions in their work related to the COVID-19 pandemic, such as fewer (human) resources and delays in logistics and processes affecting research progress. About a third of projects requested a no-cost extension, mainly due to these disruptions and working through pandemic-related backlog. After SRC review, all requested extensions were accepted by the EG.

## 5.1 GEOGRAPHICAL DISTRIBUTION RESEARCH PROJECTS

The 31 LRI-funded projects active in 2022 were carried out in 20 countries across several continents. Multiple projects are ongoing in India (6), Brazil (5), Indonesia (5), Nepal (5), Bangladesh (4), Tanzania (3), Nigeria (3), Ethiopia (3), Côte

d'Ivoire (2) and eight studies are conducted in more than one country. Noteworthy is that India, Brazil and Indonesia combined account for over 75% of newly diagnosed leprosy cases globally.



## 5.2 COMPLETED PROJECTS

The following projects have been successfully completed in 2022:

- 706.18.57: [Using plasma metabolomics to increase our understanding of metabolic changes in leprosy and associated reactions: A proof-of-concept study](#)
- 704.16.59: [Biomarkers for early detection of leprosy using comparative transcriptomics](#)
- 704.16.57: [To identify leprosy associated \*Mycobacterium leprae\* transcriptomic and human host immune signatures that aid as early signals for determination of type I and type II reactions in leprosy](#)

## 6 STRENGTHENING RESEARCH CAPACITY

An important objective of the LRI is to strengthen capacity of researchers and organisations, with a focus on those based in leprosy-endemic countries and early career researchers. Several activities in 2022 were organised with the aim to contribute to expanding research knowledge, skills and experience.

### 6.1 LRI SPRING MEETING

The LRI Spring Meeting is an annual event during which LRI-funded researchers present the progress and results of their projects to members of the SRC, SC, EG, other stakeholders and each other.

On 7-8 April 2022, the seventh Spring Meeting was held online, attended by 195 participants from 48 countries. In total, 21 progress presentations on ongoing projects and eight pitch presentations on new projects were given in two parallel tracks. In the plenary session on day 1, WHO presented on the definitions and indicators for leprosy elimination and the plenary sessions on day 2 were dedicated

to the achievements of the Excellence in Disability Prevention Integrated across Neglected Tropical Diseases (EnDPoINT) project and to the developments in the LRI and the Global Partnership for Zero Leprosy (GPZL) Research Agenda implementation.

The organisation, programme and communication were valued highly by the participants, however the wish to return to an in-person Spring Meeting when possible was expressed by many.

We look forward to hosting the Spring Meeting in-person in the Netherlands again in 2023.

### 6.2 WORKSHOP ON DATA ANALYSIS

In 2022, following a pause of several years due to COVID-19 restrictions, LRI conducted a data analysis workshop aiming to train small teams of researchers involved in LRI-funded projects in quantitative data analysis knowledge and skills. Similar to the previously organised workshops on operational research, this workshop was a combination of presentations and practical exercises, using data from the participants' projects. The workshop was organised in-person in Kathmandu, Nepal, from 7-12 September, adjacent to the NTD NGO Network (NNN) Conference. A total of 23 researchers based at institutions in six leprosy-endemic countries (Bangladesh, Ethiopia, India, Indonesia, Nepal, Nigeria) participated in the workshop.

The diverse group of tutors were from LRI Partners or had previous involvement with leprosy research. The workshop content and organisation were rated very highly by the participants and we hope the training will prove beneficial to the researchers and projects.



### 6.3 RESEARCH CAPACITY STRENGTHENING GRANT

To give further opportunity to strengthening research capacity, a second LRI call for proposals was launched in December 2022.

This research capacity strengthening grant, for

early career researchers, with a smaller scope and shorter timeline, has attracted much interest and we are excited for the proposals' review and to accept our first projects in this grant for funding in 2023.



## 7 FACILITATING TRANSLATION OF RESEARCH RESULTS INTO POLICY AND PRACTICE

LRI considers it important that research results are applicable to interrupt transmission, improve leprosy services or contribute to the wellbeing of persons affected by leprosy. In order to achieve such impact we encourage researchers to involve stakeholders in the research development and implementation process and in the dissemination of findings to optimise uptake.

### 7.1 INTERNATIONAL LEPROSY CONGRESS

In November 2022, the 21<sup>st</sup> International Leprosy Congress (ILC) was held in Hyderabad, India, attended by more than 1,000 participants with an additional 500 online.

In total, there were 28 presentations by LRI-funded projects at ILC; 13 in-person, 11 at the virtual conference and 4 poster presentations. Dr Anuj Mavlankar won the Best Paper award for his presentation “Comparative host transcriptomics as a tool to identify biomarkers of leprosy” on his work for this LRI-funded project.



### 7.2 COMMUNICATION OF PUBLICATIONS

Project publications were reported by the research groups through progress reports and by email, and subsequently added to the LRI website and linked to the Infolep portal.

In 2022 we had more than 67,000 website visitors and close to 160,000 page views. More than 20% were returning visitors, a doubling of the percentage in 2021. Several newsletters and social media posts were sent through channels of LRI Partners, which boosted the LRI website presence.



ILC was an important event for LRI stakeholders to meet, exchange ideas and provide information, further facilitated and stimulated by the LRI booth (above) and a plenary session on research priorities and funding, co-organised by LRI and GPZL (left).

The findings of a research project on meaningful engagement of persons affected by leprosy in research, carried out at the LRI Secretariat, was submitted in 2022.

The [publication](#) highlighted that the engagement of persons affected varied across research stages and reported several barriers and facilitators towards improvement.

### 7.3 IMPACT ASSESSMENT

We are approaching 10 years of LRI, during which we have granted more than €10 million to 80 projects across 20 countries. At this time we would like to look back at the outputs and wider outcomes of our funding. At the end of 2022 we have therefore initiated an impact assessment, to better understand projects' impact and identify facilitators and barriers towards stronger impact.

The findings will also provide grounds for a further discussion on how to best support and encourage research groups of our funded projects to translate study results into impact. We have planned for the data collection and analysis to take place in the first half of 2023 and look forward to the insights of this assessment.

## 8 FUTURE PERSPECTIVES

During December 2022, the funding allocations for successful proposals were decided, new calls for proposals were launched and the annual plan for 2023 was agreed.

The next year will be an exciting year for LRI. In addition to regular activities, we will mark our 10-year anniversary at several moments to highlight impact and acknowledge those who have contributed to the initiative's achievements.

Eight newly awarded research projects will start and for more than 30 ongoing projects, progress will be monitored. The submitted Letters of Intent will be reviewed after which the strongest selection moves forward. The new research capacity strengthening call for proposals has sparked high interest, we look forward to awarding this grant to promising early career researchers.

The LRI Spring Meeting will be held in-person in the Netherlands in April 2023, bringing together researchers from the funded projects and LRI committees members. An online 'Highlights of the

Spring Meeting' event will be organised a few weeks later to share with a wider audience.

In the Autumn, we aim to organise a 'writeshop' to strengthen scientific writing capacity and encourage dissemination of findings. A further training needs assessment is planned to outline a broader strategy for the coming years.

To reflect and look towards the future, a research impact assessment of the LRI-funded projects will be conducted and we will be preparing the second 5-year audit planned to take place in early 2024.

We aim to further increase the visibility and reach of LRI activities through strengthening internal and external communication and engagement with researchers, Partners and other stakeholders.

Lastly, we also look forward to our ongoing collaboration with the Global Partnership for Zero Leprosy's research pillar on the implementation of the global research agenda in our joint goal to promote and facilitate high-quality leprosy research.

## 9 OUR PARTNERS IN 2022

In 2022, the Leprosy Research Initiative comprised the following Partners:



We are grateful to the additional financial support that is provided to the Leprosy Research Initiative by the following organisations:



Interested to become a Partner of the LRI and contribute to boosting scientific research in leprosy? Contact us at [info@leprosyresearch.org](mailto:info@leprosyresearch.org)

## 10 OUR TEAM IN 2022

### 10.1 EXECUTIVES GROUP

Ms Linda Hummel	CEO, NLR (Chair)
Mr Joachim Beringer	CEO, GLRA
Mr Brent Morgan	Director, TLMI
Mr Bill Simmons	President/CEO, ALM
Ms Pascale Bernich	CEO, Damien Foundation
Mr Iñigo Lasa	Director General, Anesvad Foundation

### 10.2 STEERING COMMITTEE

Dr David Scollard	Former Director of the US National Hansen's Disease Programs (Chair)
Dr Wim H. van Brakel	Medical Director, NLR
Dr Peter Steinmann	Public Health Specialist and Epidemiologist, Swiss Tropical and Public Health Institute
Dr Christa Kasang	Research Coordinator, GLRA
Mrs Jannine Ebenso	Head of Quality Assurance, TLMI
Dr Sunil Anand	Regional Director for Asia, ALM
Dr Lucrecia Acosta Soto	Associate Professor, University of Michael Hernandez de Elche
Dr Anna Giné / Ms Arantazu Quintana	International Cooperation / Research, Anesvad Foundation
Dr Lena Fiebig	Head of Programmes, Damien Foundation

### 10.3 SCIENTIFIC REVIEW COMMITTEE

Dr Richard W. Truman (Chair)	Former Chief of the Laboratory Research Branch of the National Hansen's Disease Program / Principal Investigator of the Leprosy Research Support program of the National Institutes of Allergy and Infectious Disease, USA
Dr Jos H.M. Dekker	Rehabilitation Physician (retired), Heliomare Rehabilitation Centre at Red Cross Hospital, the Netherlands
Dr Gigi J. Ebenezer (until October 2022)	Associate Professor, Neurology Department, Johns Hopkins School of Medicine, USA
Dr Bassey E. Ebenso Prof. Dr Victor P.M.G. Rutten (until April 2022)	Lecturer in International Public Health, Leeds University, Institute of Health Associate Professor at Department of Infectious Diseases and Immunology, University of Utrecht, the Netherlands / Extraordinary Professor at Department of Veterinary Tropical Diseases, University of Pretoria, South Africa
Prof. Dr Françoise Portaels Prof. Dr Patricia D. Deps	Professor Emeritus, Institute of Tropical Medicine Antwerp, Belgium Full Professor and Head of the Department of Social Medicine, Postgraduate Programme in Infectious Diseases, Federal University of Espirito Santo, Brazil
Prof. Paul Fine	Professor Emeritus of Communicable Disease Epidemiology, London School of Hygiene and Tropical Medicine, United Kingdom
Dr Zoica Bakirtzief	Adjunct Associate Professor (External Professor), Psychology Department, Federal University of Santa Maria, Brazil
Dr Ad P. Koets (from April 2022)	Senior Scientist and Head of the National Reference Laboratory for Mycobacterial Infections and Tuberculosis at Wageningen Bioveterinary Research (WBVR), the Netherlands

### 10.4 LRI SECRETARIAT

Dr Suzan Trienekens (from May 2022)	Coordinator
Dr Nienke Veldhuijzen (until April 2022)	Technical Officer
Ms Nicole Dinnissen	Programme Officer
Ms Chrysa Menexi	Support Officer
Mr Stephen Labib	Communication Adviser

## 11 REVIEWER ACKNOWLEDGEMENTS

We would like to thank all our external reviewers who dedicated their time to the peer review of the full proposals in 2022:

**KIM HARTOG**

**PIM KUIPERS**

**LINDA ADAMS**

**MALCOLM DUTHIE**

**IAN HARPER**

**LALIT KANT**

**MARIVIC BALAGON**

**ANOUK VAN HOOIJ**

**JOHN SPENCER**

**BERNARD NAAFS**

**CLAIRE FULLER**

**MAYA THOMAS**

**PAULA BRANDÃO**

**ASTRI FERDIANA**

**SOLOMON RAJU MOTURU**

**MALLIKA LAVANIA**

**RAMANUJ LAHIRI**

**ROXANE SCHAUB**

**SARJU SING RAI**

**BOUKE DE JONG**

**GERT DOEKES**

**NIENKE VELDHUIJZEN**

**ANNEKE TAAL**

**ERIK SLIM**

**FONS VAN DIJK**

**JAYMES COLLINS**

**KIDIST BOBOSHA**

**KEI MIKITA**

**YASH GUPTA**

**ERWIN SCHURR**

**KERSTIN BEISE**

**WILLIAM FABER**

**LINDA LEHMAN**

**GAIL DAVEY**

**ABDOULAYE MAREGA**

**SOFIE BRAET**

**PATRICK LAMMIE**

**SUNDEEP CHAITANYA VEDITHI**

**JURAJ IVANYI**



*Survey data collection for the project "Impact of SDR-PEP under routine programme conditions in Nepal" (NLR Nepal).*

## 12 FINANCIAL NARRATIVE

### Summary Budget LRI 2023

Amounts x €1,000/ in Euro thousands

#### Income:

*Income from contributors*  
*Other income*  
*Income in return of goods and services*

#### **Sum of income**

	Budget 2023	Actuals 2022
	1,133	1,179
	523	249
	15	15
<b>Sum of income</b>	<b>1,671</b>	<b>1,443</b>

#### Expenses:

*Research project costs*  
*Running costs*

#### **Sum of expenses**

	Budget 2023	Actuals 2022
	2,009	1,411
	259	254
<b>Sum of expenses</b>	<b>2,268</b>	<b>1,665</b>

#### **Result**

**-597**

**-222**

### Financial results 2022

In 2022 LRI received a total contribution from partners of €1,179,000 and in addition to this an amount of €249,169 was received from co-funding partners towards specific research projects and running costs. The freely available funds consist of cash held in the bank account and amount to €744,922 as per 31 December 2022.

The total expenses arrived at €1,664,839. The deficit of 2022 amounting to €221,193 is withdrawn from the earmarked reserves of LRI. This decreased the total earmarked reserves from

€1,617,095 to €1,395,901. The earmarked reserves are formed in accordance with LRI policy, please refer to the notes accompanying the annual account for 2022 for LRI policy.

### Outlook 2023

LRI will receive a contribution of €1,133,000 from partners, an amount of €523,000 for co-financed projects and a maximum amount of €15,000 in return of goods and services. Looking forward, we expect the expenditures to increase to €2,268,000 due to an increase in project activities.

## 13 ANNUAL ACCOUNTS 2022

**Amsterdam, Netherlands**

**Date: 23 June 2023**



## CONTENTS

I. Balance sheet as at 31 December 2022.....	18
II. Statement of Income and Expenses 2022.....	19
III a. Notes accompanying the Annual Accounts 2022 .....	20
III b. Notes to Balance sheet 2022.....	22
III c. Notes to the Income and Expenditure 2022.....	24
IV Independent auditor’s report .....	27
V Annexes .....	28
annex V.1 Overview of research projects .....	29
annex V.2 Budget LRI 2023 .....	31
annex V.3 Multi Annual Budget LRI 2023-2025.....	32
annex V.4 Board and Executives Group of LRI .....	33

## I. BALANCE SHEET AS AT 31 DECEMBER 2022

Amounts in Euros

Notes	31/12/2022	31/12/2021
<b>ASSETS</b>		
2. <i>Current assets</i>		
Accounts receivable	0	41,041
Balances and accounts from NLR	1,220,761	1,108,020
Cash and cash equivalents	<u>744,922</u>	<u>802,606</u>
<b>Total assets</b>	<b><u>1,965,683</u></b>	<b><u>1,951,667</u></b>
<b>LIABILITIES</b>		
3. <i>Reserves</i>		
Earmarked reserves	<u>1,395,901</u>	<u>1,617,095</u>
	<b>1,395,901</b>	<b>1,617,095</b>
4. <i>Short-term liabilities</i>		
Accounts payable	<u>569,782</u>	<u>334,572</u>
<b>Total liabilities</b>	<b><u>1,965,683</u></b>	<b><u>1,951,667</u></b>

## II. STATEMENT OF INCOME AND EXPENSES 2022

Amounts in Euros

Notes	Realisation 2022	Budget 2022	Realisation 2021
5.	<b>INCOME:</b>		
	Income from allied and joint non-profit organisations	1,179,000	1,179,000
	Other income	249,169	250,080
	Income in return of goods and services	15,477	43,396
	<b>Total income</b>	<b>1,443,646</b>	<b>1,472,476</b>
6.	<b>EXPENSES:</b>		
	Research project costs	1,411,106	572,691
	Staff costs, housing and office costs	227,529	234,955
	Other operating expenses	26,204	27,233
	<b>Total expenses</b>	<b>1,664,839</b>	<b>834,879</b>
	<b>Result of income and expenses</b>	<b>-221,193</b>	<b>637,597</b>

### III A. NOTES ACCOMPANYING THE ANNUAL ACCOUNTS 2022

#### General and accounting policies

These are the annual accounts of 2022 of Leprosy Research Initiative (LRI). LRI has been registered since June 1st 2015 as a foundation under Dutch law. These are the annual accounts of LRI presented for the year 2022, which started on the 1st of January and ended December 31st. LRI is registered at Chamber of Commerce no. 63431874.

#### General note on the accounting policies

The annual accounts have been prepared in accordance with Guideline C for small non-profit organisations (Dutch: Richtlijn C1 Kleine organisaties zonder winststreven) as published by the Dutch Accounting Standards Board (Raad voor de Jaarverslaggeving) and revised in 2021.

#### Activities

The Leprosy Research Initiative (LRI) is a leprosy research funding and capacity strengthening organisation. Partners of the LRI contribute to a joint fund which is managed by the LRI and reserved for research that is exclusively or strongly related to leprosy. An efficient, transparent and scientifically sound and rigorous selection process was developed for the selection of research proposals as well as a scientifically high-quality monitoring mechanism of research projects. A comprehensive explanation of our mission and goals and a detailed account of the content of our work can be found in our annual report.

#### The LRI work proceedings and work activities.

The LRI fully delegated all its work proceedings and activities to NLR. NLR runs Leprosy Research Initiative's secretariat and all work proceedings and activities are also performed by NLR. The Supervisory Board of NLR supervises the proceedings and activities as reported by the NLR Director.

#### Registered address

The registered and actual address of the LRI is Wibautstraat 137k, 1097 DN in Amsterdam, The Netherlands.

#### Accounting period

The annual accounts have been drawn up for an accounting period of one year. The financial year is equal to the calendar year. The annual accounts have been prepared on a historical cost basis of accounting.

#### Accounting policies for the valuation of assets and liabilities and the determination of the result

All amounts in the annual accounts are in Euros or a multiple of 1,000 Euro or rounded to the nearest amount in Euros. The amounts are compared to the part for research activities and objectives from the formal LRI budget for 2022 (approved by the Supervisory Board of NLR in December 2021).

The annual accounts have been prepared in accordance with the principle of continuity.

#### Income from funding and the allocation of funds

Each LRI partner has committed an annual contribution to the LRI joint fund for research projects and contributes an equal share to LRI running costs. Associate partners and co-financiers contribute to specific projects and/or to the running costs. The income from partners, associate partners and co-financiers are recognised in the year to which the item of income relates and are allocated to the year in question on an actual cost basis. The income is shown gross, before any deduction of associated costs, unless otherwise stated. Necessary costs to realise certain benefits, are presented in the statement of income and expenses as expense.

#### Grant commitments

The grant commitments are recognised as conditional commitments. The LRI receives from the grantees two progress reports annually,

including scientific progress regarding the research project and financial statements: a semi-annual report and an annual report. The semi-annual report must be submitted each year on September 1st. The deadline for submission of the annual report is March 1st. The amounts that are expected to be settled in future years and are accounted for, insofar as expenditures are appropriate within the condition, are included as short-term liabilities. The LRI does not hold any long-term liabilities.

### **Accounts receivable**

Receivables are initially valued at the fair value of the consideration to be received, including transaction costs if material.

### **Cash and cash equivalents**

Cash and cash equivalents include cash and bank balances represent the balance of the bank account held for the head office of the LRI, in the Netherlands and are immediately accessible. The LRI does not have any borrowings or loans. The LRI does not invest, nor does it make use of any financial instruments.

### **General note on the balance sheet and statement of income and expenses**

In general, assets and liabilities are stated at the amounts at which they were acquired or incurred, or current value. If not specifically stated otherwise, they are recognised at the amounts at which they were acquired or incurred. The balance sheet and statement of income and expenses include references to the notes. Notes to the line items of the balance sheet and the statement of income and expenses have been numbered in the financial statements.

### **Foreign currency**

The annual accounts are presented in Euro. Transactions in foreign currency are converted to Euro at the exchange rate of the transaction date.

### **Reserves**

The LRI ensures that contributions are used for the intended cause. If more funds are allocated to a specific research project than the reported expenditure in that particular year for that project, the LRI will allocate the surplus amount to the same project in the remaining grant period. If, upon completion, the actual expenditures of a specific project are lower than the grant awarded, the remaining budget will be deposited in the joint fund. The (earmarked) reserves are the result of income and expenses and are held in accordance with budgets for grant awards and for the running costs of the LRI for future years.

### **Reserves and investments**

The result of 2022 is withdrawn from the earmarked reserves. The earmarked reserves are used for active and new grant awards as well as running costs to ensure the sustainability of the LRI with a horizon of three years. The LRI holds no investments.

### **Management of the LRI and remuneration of Supervisory Board and Executive Group**

The LRI is managed by the director of NLR, implementing the decisions of the LRI Executive Group and supervised by the Supervisory Board of NLR. No remuneration was paid to the Supervisory Board members and director of NLR, and no loans, advances or guarantees were given. In 2022 no expenses were reimbursed.

### **Events after the reporting period**

In these accounts no significant events after the reporting period occurred which should be included.

### **Publication**

This report is available on [www.leprosyresearch.org](http://www.leprosyresearch.org). The 2022 annual report and the annual accounts are available in a digital format primarily for environmental reasons. A (free of charge) printed copy can be obtained on request.

### III B. NOTES TO BALANCE SHEET 2022

In the notes to the balance sheet variances between 2021 and 2022 are elaborated upon further.

#### 1. Tangible fixed assets

Tangible fixed assets are used for the main activities and entirely held for operational management. The LRI holds no tangible fixed assets and therefore this is not valued in 2021 and 2022.

#### 2. Current assets

This item includes all receivables which are due within one year, amounts paid in advance and cash and cash equivalents.

	<b>31 December 2022</b>	<b>31 December 2021</b>
	in €	in €
Contributions and amounts due	0	41.041
Balances and accounts from NLR	1.220.761	1.108.020
Cash and cash equivalents	744.922	802.606
	<b><u>1.965.683</u></b>	<b><u>1.951.667</u></b>

The income from contributions is accounted for once the commitment has been confirmed. No amounts were due. The item *Balances and accounts from NLR* relate to the receivable funds from NLR this amount is expected but not yet received income and consists of an amount of 1 million euro which has been temporary deposited in the account of NLR as part of LRI's cash management and is freely available to LRI. The remainder of the total amount under item *Balances and accounts from NLR* comprises the contribution of NLR towards LRI and the paid in advance staff costs, these costs between LRI and NLR are settled in 2023.

Cash and cash equivalents are cash and bank balances in Euros in the Netherlands held by the LRI office in Amsterdam. The cash and cash equivalents balance at ING Bank for the year ended 31 December 2022 is €744,922. The LRI holds its main current account at ING Bank (NL). The balance of cash and cash equivalents are available immediately.

#### 3. Reserves

The LRI ensures that contributions are used for the intended cause. If more funds are allocated to a specific research project than the reported expenditure in that particular year for that project, the LRI will allocate the surplus amount to the same project in the remaining grant period. If, upon completion, the actual expenditures of a specific project are lower than the grant award, the remaining budget will be deposited in the joint fund. The (earmarked) reserves are the result of income and expenses and are held in accordance with budgets for grant awards and for the running costs of the LRI for future years.

The LRI's reserves are as follows:

	<b>31 December 2022</b>	<b>31 December 2021</b>
	in €	in €
Earmarked reserves	1.395.902	1.617.095
	<u><b>1.395.902</b></u>	<u><b>1.617.095</b></u>

#### General notes on the reserves

- For the budget of 2022, a deficit of €456,000 was accounted. Many of the research projects funded by the Leprosy Research Initiative have seen disruptions in their work due to measures related to the COVID-19 pandemic resulting in delayed implementation and progress. The LRI Executives Group has accepted requests from projects for no-cost extensions to continue activities related to the grant award. The negative result of 2022 arrived at €221,193 and is withdrawn from the earmarked reserves of the LRI.
- The LRI ensures that contributions are used for the intended cause. If more funds are allocated to a specific research project than the reported expenditure in that particular year for that project, the LRI will allocate the surplus amount to the same project in the following year. If, upon completion, the actual expenditures of a specific project are lower than the grant award, the remaining budget will be deposited in the joint fund. If, upon completion, the actual expenditures of a specific project are lower than the grant award, the remaining budget will be added to the earmarked reserves. While partners contribute to the joint fund, associated partners and co-financers contribute to specific projects. Some of the funds received in 2022 for specific projects remained unspent. This has been re-allocated to the 2023 budget.
- The LRI holds no continuity reserve.

	Earmarked reserves	Total
	in €	in €
Balance as per 1 January 2022	1.617.095	1.617.095
- Movements	0	0
- Withdrawals and additions	<u>-221.193</u>	<u>-221.193</u>
<b>Balance as per 31 December 2022</b>	<u><b>1.395.902</b></u>	<u><b>1.395.902</b></u>

#### 4. Short term liabilities

All current liabilities fall due in maximum four years from date of signature. The fair value of the current liabilities approximates the book value due to its short-term character.

	<b>31 December 2022</b>	<b>31 December 2021</b>
	in €	in €
Accounts payable/creditors	569.782	334.572
	<u><b>569.782</b></u>	<u><b>334.572</b></u>

Accounts payable are mainly amounts payable for audit and research costs, not yet invoiced in 2022. The amounts received in advance (€341,528) are also calculated under this item, which are unspent funds from Turing Foundation and other contributors and partners towards research projects.

### Commitments not included in the balance sheet

The LRI has made commitments for 2022 for running research projects for a total value of €1,782,602. The total budgeted research costs for the years 2023-2025 are €3,780,000. See annex 3 for details.

### Events after balance sheet date

No events have occurred between the balance sheet date and the date on which the Supervisory Board adopted the annual accounts, which would affect the 2022 annual accounts or the condition of LRI at the end of the financial year or thereafter.

## III C. NOTES TO THE INCOME AND EXPENDITURE 2022

### 5. Income

Each LRI partner has committed an annual contribution to the joint LRI research fund and contributes an equal share to the LRI running costs. In 2022 the partners were: American Leprosy Missions (ALM), German Leprosy and Tuberculosis Relief Association (GLRA/DAHW), The Leprosy Mission International (TLM), Damien Foundation, NLR and Anesvad Foundation. The breakdown of the total income is as follows:

	Realisation 2022	Budget 2022	Realisation 2021
	in €	in €	in €
<b><i>Income from allied and joint non-profit organisations</i></b>			
ALM	168.000	168.000	168.000
GLRA/DAHW	188.000	188.000	188.000
TLM International	138.000	138.000	138.000
Anesvad Foundation	200.000	200.000	200.000
NLR	350.000	350.000	350.000
Damien Foundation	135.000	135.000	135.000
<b><i>Other income</i></b>			
Turing Foundation	155.756	227.000	129.731
Other amounts from partners	40.560	77.000	119.894
Other amounts	52.853	9.000	454
<b><i>Income in return of goods and services</i></b>			
Others	15.477	14.000	43.396
	<b>1.443.646</b>	<b>1.506.000</b>	<b>1.472.475</b>



The total amount of income available for allocation in line with the objectives for 2022 arrived at €1,443,646.

The realisation of the total income in 2022 was 4% lower than budgeted. As per agreement, Turing Foundation contributed 5% of their co-funding on project funding towards running costs as realised at the end of the year 2022. For 2022 we received a contribution from Turing Foundation of €155,756 and an earmarked contribution from St Francis Leprosy Guild.

The amount under other income from others consists surplus funds after completing projects and €8,916 being the contribution of Turing Foundation for the running costs. The amount of €15,477 under the item income in return of goods and services is the contribution of the Global Partnership for Zero Leprosy towards salary cost of the LRI coordinator for a specific assignment.

## 6. Expenses

### Research

The expenses mainly consist of funding of (scientific) research project costs in line with the active grant awards. A total of 31 research projects received funding in 2022. Please refer to annex 1 for the details of the project expenses related to the budget of 2022.

	Realisation 2022	Budget 2022	Realisation 2021
<b>Research</b>	in €	in €	in €
Research projects costs	1.411.106	1.704.676	572.691
	<b>1.411.106</b>	<b>1.704.676</b>	<b>572.691</b>

The LRI spent a total of €1,411,106 on research funding excluding the running costs. The actual research project costs were almost 85% of the budgeted project costs. This is below budget due to the ongoing impact of the COVID-19 pandemic. Several newly granted projects started activities in the second half of 2022, while the budget foreseen was for a full calendar year. The LRI Executives Group has accepted requests from projects for no-cost extensions to continue activities related to the grant awarded.

### Running costs

The LRI running costs consist of staff costs for the LRI officers, housing expenses and other operating expenses that cannot be directly allocated to the research projects. The realization of staff costs were 4% higher than budgeted and the housing and office expenses of 2022 were in accordance with the budget, other operating expenses were almost 40% below budget.

	Realisation 2022	Budget 2022	Realisation 2021
<b>Running costs</b>	in €	in €	in €
Staff expenses	190.529	183.000	196.955
Housing expenses	20.000	20.000	21.000
Office expenses	17.000	17.000	17.000
Other operating expenses	26.204	36.600	27.233
	<b>253.733</b>	<b>256.600</b>	<b>262.188</b>

	Realisation 2022	Budget 2022	Realisation 2021
<b>Staff expenses</b>	in €	in €	in €
Wages and salaries	147.166	138.000	153.571
Social security costs	25.556	26.000	24.453
Pension contributions	17.434	17.000	16.981
Other personnel costs	373	2.000	1.950
	<b>190.529</b>	<b>183.000</b>	<b>196.955</b>
<b>TOTAL EXPENSES</b>	<b>1.664.839</b>	<b>1.961.276</b>	<b>834.879</b>
<b>TOTAL INCOME</b>	<b>1.443.646</b>	<b>1.506.000</b>	<b>1.472.475</b>
<b>RESULT</b>	<b>-221.193</b>	<b>-455.276</b>	<b>637.596</b>

In 2022 on average 2.7fte's (2021: 2.9fte's) were employed via NLR in the secretariat of the LRI in Amsterdam. The LRI has no staff employed abroad during 2022. For the LRI officers the NLR standard terms, benefits and conditions of employment apply.

The LRI has no staff members on the payroll; all staff is employed by NLR and the expenditure is recharged to the LRI. The total staff costs of the LRI amount to €190,529 and consist of wages and salaries, pension costs (insured with Pensioenfonds Zorg en Welzijn), social security charges and other personnel costs.

GPZL contributed €15,477 towards staff costs for 2022 this amount is according the classification presented under the item income in return of goods and services (note 5).

## IV INDEPENDENT AUDITOR'S REPORT

## INDEPENDENT AUDITOR'S REPORT

To: the supervisory board and the management of Stichting Leprosy Research Initiative.

### A. Report on the audit of the financial statements 2022 included in the annual report.

#### Our opinion

We have audited the financial statements 2022 of Stichting Leprosy Research Initiative based in Amsterdam, the Netherlands.

In our opinion, the accompanying financial statements give a true and fair view of the financial position of Stichting Leprosy Research Initiative at 31 December 2022 and of its result for 2022 in accordance with the 'RJ-Richtlijn C1 Kleine organisaties zonder winststreven' (Guideline for annual reporting C1 'Small not-for-profit organisations') of the Dutch Accounting Standards Board).

The financial statements comprise:

1. the balance sheet as at 31 December 2022;
2. the statement of income and expenses for 2022; and
3. the notes comprising of a summary of the accounting policies and other explanatory information.

#### Basis for our opinion

We conducted our audit in accordance with Dutch law, including the Dutch Standards on Auditing. Our responsibilities under those standards are further described in the 'Our responsibilities for the audit of the financial statements' section of our report.

We are independent of Stichting Leprosy Research Initiative in accordance with the Verordening inzake de onafhankelijkheid van accountants bij assuranceopdrachten (ViO, Code of Ethics for Professional Accountants, a regulation with respect to independence) and other relevant independence regulations in the Netherlands. Furthermore we have complied with the Verordening gedrags- en beroepsregels accountants (VGBA, Dutch Code of Ethics).

We believe the audit evidence we have obtained is sufficient and appropriate to provide a basis for our opinion.

Oranje Nassaulaan 1  
1075 ah Amsterdam  
Telephone 020 571 23 45

E-mail [info@dubois.nl](mailto:info@dubois.nl)  
[www.dubois.nl](http://www.dubois.nl)  
CoC-number 34374865



**B. Report on the other information included in the annual report.**

The annual report contains other information, in addition to the financial statements and our auditor's report thereon.

The other information consists of:

- The Management Board's report;
- Annex 1: Overview of research projects;
- Annex 2: Budget 2022;
- Annex 3: Multi Annual Budget 2022-2025;

Based on the following procedures performed, we conclude that the other information is consistent with the financial statements and does not contain material misstatements.

We have read the other information. Based on our knowledge and understanding obtained through our audit of the financial statements or otherwise, we have considered whether the other information contains material misstatements.

By performing these procedures, we comply with the requirements of the Dutch Standard 720. The scope of the procedures performed is substantially less than the scope of those performed in our audit of the financial statements. Management is responsible for the preparation of the other information, including the Management Board's report in accordance with Guideline for annual reporting 'RJ-Richtlijn C1 Kleine organisaties zonder winststreven' (Guideline for annual reporting C1 'Small not-for-profit organisations').

**C. Description of responsibilities regarding the financial statements**

**Responsibilities of the supervisory board and the management board for the financial statements.**

The management board is responsible for the preparation and fair presentation of the financial statements in accordance with the Guideline for annual reporting 'RJ-Richtlijn C1 Kleine organisaties zonder winststreven' (Guideline for annual reporting C1 'Small not-for-profit organisations'). Furthermore, the management board is responsible for such internal control as the management board determines is necessary to enable the preparation of the financial statements that are free from material misstatement, whether due to fraud or error.

As part of the preparation of the financial statements, the management board is responsible for assessing the foundation's ability to continue as a going concern. Based on the financial reporting framework mentioned, the management board should prepare the financial statements using the going concern basis of accounting, unless the management board either intends to dissolve the foundation or to cease operations, or has no realistic alternative but to do so.

The management board should disclose events and circumstances that may cast significant doubt on the foundation's ability to continue as a going concern in the financial statements.

The supervisory board is responsible for overseeing the organisation's financial reporting process.

### **Our responsibilities for the audit of the financial statements**

Our objective is to plan and perform the audit engagement in a manner that allows us to obtain sufficient and appropriate audit evidence for our opinion.

Our audit has been performed with a high, but not absolute, level of assurance, which means we may not detect all material errors and fraud during our audit.

Misstatements can arise from fraud or error and are considered material if, individually or in the aggregate, they could reasonably be expected to influence the economic decisions of users taken on the basis of these financial statements. The materiality affects the nature, timing and extent of our audit procedures and the evaluation of the effect of identified misstatements on our opinion.

We have exercised professional judgement and have maintained professional scepticism throughout the audit, in accordance with Dutch Standards on Auditing, ethical requirements and independence requirements.

Our audit included among others:

- identifying and assessing the risks of material misstatement of the financial statements, whether due to fraud or error, designing and performing audit procedures responsive to those risks, and obtaining audit evidence that is sufficient and appropriate to provide a basis for our opinion. The risk of not detecting a material misstatement resulting from fraud is higher than for one resulting from error, as fraud may involve collusion, forgery, intentional omissions, misrepresentations, or the override of internal control;
- obtaining an understanding of internal control relevant to the audit in order to design audit procedures that are appropriate in the circumstances, but not for the purpose of expressing an opinion on the effectiveness of the entity's internal control;
- evaluating the appropriateness of accounting policies used and the reasonableness of accounting estimates and related disclosures made by management;
- concluding on the appropriateness of management's use of the going concern basis of accounting, and based on the audit evidence obtained, whether a material uncertainty exists related to events or conditions that may cast significant doubt on the foundation's ability to continue as a going concern. If we conclude that a material uncertainty exists, we are required to draw attention in our auditor's report to the related disclosures in the financial statements or, if such disclosures are inadequate, to modify our opinion. Our conclusions are based on the audit evidence obtained up to the date of our auditor's report. However, future events or conditions may cause a foundation to cease to continue as a going concern.
- evaluating the overall presentation, structure and content of the financial statements, including the disclosures; and
- evaluating whether the financial statements represent the underlying transactions and events in a manner that achieves fair presentation.

We communicate with those charged with governance regarding, among other matters, the planned scope and timing of the audit and significant audit findings, including any significant findings in internal control that we identify during our audit.

Amsterdam, 29 June 2023

Dubois & Co. Registeraccountants

Origineel getekend door:  
A.P. Buteijn RA en A. Koek RA

## V ANNEXES



## annex V.1 Overview of research projects

Project no.	Project title	Realisation 2022	Budget 2022
7031541	TLM Nepal/Helminth influences in leprosy	0	20.000
7041671	ENLIST MTX - two randomised controlled trials in ENL	281.549	281.550
7061839	PUCPR/Functional analysis of candidate variants in the early-onset leprosy phenotype using novel cellular model	14.840	19.644
7061857	EUSM/Describing metabolic profiles in leprosy and its morbidities using plasma metabolomics, Brazil	13.955	0
7071902	Erasmus MC/Monitoring effect of prophylactic interventions, Bangladesh	0	22.500
7071920	UGM/Implementation Dapsone Hypersensitivity Syndrome, Indonesia/ Nepal	50.932	54.253
7071945	DF Bangladesh/Assessing the effectiveness of IECS, Bangladesh	48.816	35.642
7071960	GLRA - NLTB/Collaboration traditional healers, Sierra Leone	38.577	41.427
7071962	HCI/Integrated approach skin camp, eSkin Health app, Côte d'Ivoire	11.654	35.307
7071921	BLP/Clofazimine for MB cases at high risk of ENL, Bangladesh/India	23.153	46.305
7071964	ALM/LepVax	0	82.500
7090020	SRC/LRI spring & autumn meetings	12.140	23.000
7061899	Workshops	27.683	34.000
7082004	Oxford Univ./Efficacy and Tolerability of Adjunct Metformin in Multidrug Treatment, Indonesia	0	49.644
7082009	ICMR/Molecular Mechanisms of Immunomodulation Imparted by MIP vaccine	43.174	71.440
7082012	VU/Informing (generic) approaches to reduce stigma	93.650	93.650
7082014	NIMR/Leprosy Antimicrobial Resistance Surveillance in PEP Setting, Tanzania (LARS)	44.981	44.981
7082015	GLRA Nigerian/Improving mental health&Quality of Life of Persons affected by Leprosy or Buruli ulcer	46.365	46.365
7082017	ENAPAL/Assessing long-term outcomes & sustainability of family-based approaches, Ethiopia	66.151	70.786
FP21.17	ALM/Assessing Electronic Data Collection Tools, Pathways and HMIS Integration	0	26.578
FP21.8	NHDP/The Use of Molecular Methods in Subclinical Murine Models of Leprosy	34.520	34.520
FP21.14	VU/Improving management of leprosy reactions and quality of life of persons affected	75.707	54.070
FP21.20	NLR IO/Testing an App supported delivery system for Leprosy Post Exposure Prophylaxis (PEP) services	73.812	73.812
FP21.10	LUMC/Point-of-care immunodiagnostic tests	54.230	54.230
FP21.26	Effect Hope/Exploring strategies and identifying effective mechanism, Cote d'Ivoire	54.890	54.890
7090021	Publication costs	0	9.000
7071991	ILC	18.274	16.500
FP22.17	TLM Trust India/Comparison of removable device & total contact cast for healing of ulcer	17.250	23.144

<b>FP22.6</b>	TLM Niger/Understanding & Reducing Leprosy-Related Stigma Among Healthcare Workers, Niger	49.977	50.280
<b>FP22.21</b>	PLF/COMBINE: Leprosy elimination by community screening & mass chemoprophylaxis, Kiribati	25.040	49.652
<b>FP22.9</b>	RI-MUHC/Identifying drug targets to treat leprosy reactions via genetic susceptibility factors	50.393	50.393
<b>FP22.19</b>	NLR Nepal/How effective is ongoing SDR-PEP implementation under routine programme conditions	49.930	49.930
<b>FP22.15</b>	RedAid Nigeria/Audio & written interventions to improve the perception, knowledge & attitudes towards leprosy	46.227	35.880
<b>FP22.8</b>	Erasmus MC/Endgame strategy for leprosy in the Maldives: optimal targeting of PEP	23.052	48.803
<b>7099998</b>	Admin diff. balances and funds returned	20.183	0
	<b>Total project costs</b>	<b>1.411.106</b>	<b>1.704.676</b>

## annex V.2 Budget LRI 2023

	Budget 2023	Actuals 2022	Budget 2022
<b>Income</b>			
<b><i>Income from contributors</i></b>			
ALM	174	168	168
Damien Foundation	35	135	135
Effect Hope	36	0	0
GLRA/DAHW	194	188	188
TLM International	144	138	138
Anesvad Foundation	200	200	200
NLR	350	350	350
<b><i>Other income</i></b>			
Turing Foundation	426	156	236
Income for co-financed projects	97	41	77
Income from others	0	53	0
<b><i>Income in return of goods and services</i></b>	15	15	14
<b>Sum of income</b>	<b>1.671</b>	<b>1.444</b>	<b>1.506</b>

	Budget 2023	Actuals 2022	Budget 2022
<b>Expenses</b>			
Research project costs	2.009	1.411	1.705
<b>Sum of expenses</b>	<b>2.268</b>	<b>1.665</b>	<b>1.962</b>

<b>Result</b>	<b>-597</b>	<b>-221</b>	<b>-456</b>
---------------	-------------	-------------	-------------

## annex V.3 Multi Annual Budget LRI 2023-2025

	Budget 2023	Projection 2024	Projection 2025
<b>Income:</b>			
Income from contributors	1.133	1.088	1.092
Other income	523	308	146
Income in return of goods and services	15	0	0
<b>Sum of income</b>	<b>1.671</b>	<b>1.396</b>	<b>1.238</b>
<b>Expenses:</b>			
Approved Leprosy research projects (ongoing)	2.009	1.158	613
	<b>2.009</b>	<b>1.158</b>	<b>613</b>
Running costs	259	267	272
	<b>259</b>	<b>267</b>	<b>272</b>
<b>Sum of expenses</b>	<b>2.268</b>	<b>1.425</b>	<b>885</b>
<b>Result</b>	<b>-597</b>	<b>-29</b>	<b>353</b>

## annex V.4 Board and Executives Group of LRI

**Management Board**

From	Until	
NLR	01/06/2015	-

**Executives Group**

The LRI Executives Group (EG) consists of the executive directors of the LRI partners.

Mr B. Simmons

Chief Executive Officer; American Leprosy Missions

Mr J. Beringer

Chief Executive Officer; German Leprosy Relief Association

Mr B. Morgan

Chief Executive Officer; The Leprosy Mission International

Ms P. Bernich

Chief Executive Officer; Damien Foundation

Mr I. Lasa

General Director; Anesvad Foundation

Ms L. Hummel

Chief Executive Officer; NLR (Chair)



# LEPROSY RESEARCH INITIATIVE

## COLOPHON

Publication: June 2023

The Annual Report of the Leprosy Research Initiative is published on: [leprosyresearch.org/about-us/achievements](http://leprosyresearch.org/about-us/achievements)

Cover photo: Survey data collection for the project “Impact of SDR-PEP under routine programme conditions in Nepal” (NLR Nepal)

**Postal address:**  
P.O. Box 95005  
1097 DN Amsterdam  
The Netherlands

**Visiting address:**  
Wibautstraat 137k  
**Email:**  
The Netherlands

**Web:**  
[www.leprosyresearch.org](http://www.leprosyresearch.org)  
[info@leprosyresearch.org](mailto:info@leprosyresearch.org)